

CM2 Smart C&I All-in-One BESS

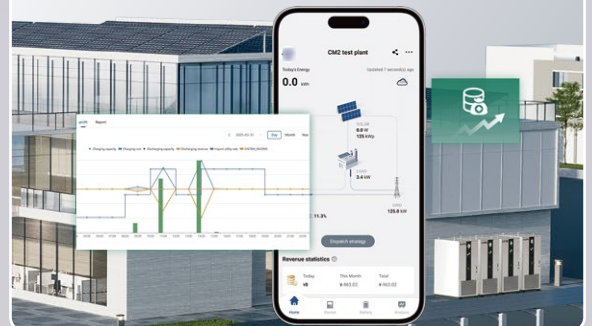
Redefining with Innovative
Technology Safety, Efficiency,
and Profitability



Mission-critical power hub
5-in-1 PCS with IP65 defense

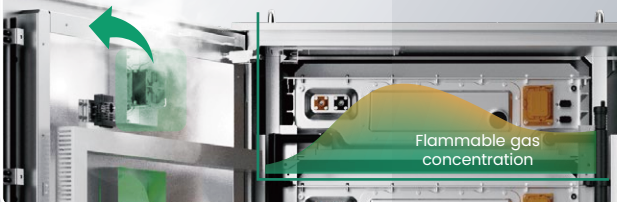


**Multi-mode integrated
intelligent scheduling**
increasing revenue by
over **10%**



Active Defense

Gas Detector + Ventilation



Directional explosion venting

shockwaves
vertically diverted



EI-60 Fireproof Cabinet

Resists penetration by
1200°C flames, fire
resistance time 1-2
hours



VPP Support



AC coupling support



195kWh/m²



90%+ RTE



Cell level detection



Plug and play

MODEL	CM2-99.9K-261	CM2-125K-261
Battery Parameter		
Cell Type	LFP 3.2V/314Ah	
System Configuration	260S1P	
Rated Energy [kWh]	261	
Rated Battery Voltage [V]	832	
Voltage Range [V]	728-936	
Number of Battery Packs	5	
Depth of Discharge [%]	0-100	
Charge/Discharge Rate [C]	0.5	
Battery Pack Protection Level	IP67	
Battery Cell Cycles	≥8000@70% EOL	
AC Parameters		
Rated Charge/Discharge Power [kW]	99.9	125
Max. Charge/Discharge Power [kW]	99.9	137.5
Max. Charge/Discharge Current [A]	151.7@380V, 144@400V	208.9@380V, 198.5@400V
I _{cw} [kA]	<10, 1s	
I _{cc} [kA]	<10	
Rated AC Voltage [V AC]	380/400, 3L+N+PE	
Rated Frequency [Hz]	50	
Power Factor [cos φ]	> 0.99	
Adjustable Power Factor Range	0i - 1 - 0c	
Total Harmonic Distortion [THDi]	< 3%	
General Parameters		
Topology	Non-isolated	
Ingress Protection Class	IP54 (Cabinet); IP65 (PCS)	
Cooling Type	Liquid cooling (Battery); air forced (PCS)	
Corrosion Protection Level	C4	
Communication	Wi-Fi/Ethernet/RS485	
Operating Temperature Range [°C]	-25°C to +55°C	
Relative Humidity [%]	0-95, non-condensing	
Maximum Operating Altitude [m]	2000	
Fire Protection	Battery pack-level and cabinet-level aerosols	
Dimension [H*W*D] [mm]	2325*1030*1400	
Weight [kg]	2600	
Warranty [Year]	10	
Grid Code	CEI-021, CEI-016, EN50549-1, EN50549-2	
Safety Standard and EMC	IEC 62619, IEC 62477-1, IEC 61000-6-2, IEC 61000-6-4, UN 38.3	